

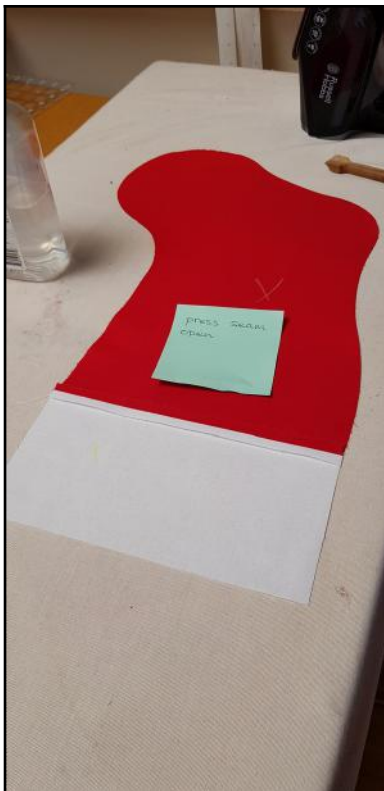
Quilted and Appliqué Christmas Stocking

Step 1



Attach stocking body front to cuff rights sides together. Stitch with 3/8" (1 cm) seam. 2.5 mm straight stitch length.

Press seam open.



Repeat for lining back and front pieces and cuffs.



Step 2

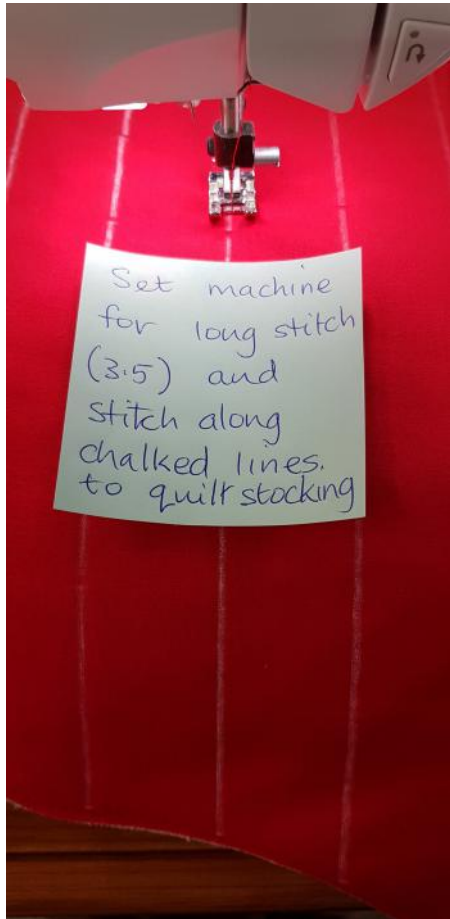
Lay front stocking body and back stocking body on wadding. Wrong side of fabric to wadding.



Mark quilting lines vertically 2 inches apart with tailors chalk or water soluble pen.



Quilt the layers together with a long straight stitch (3.5 mm). You can use a Walking Foot or Dual Feed Foot if you have one. Stitch at a slow speed starting from the centre line.

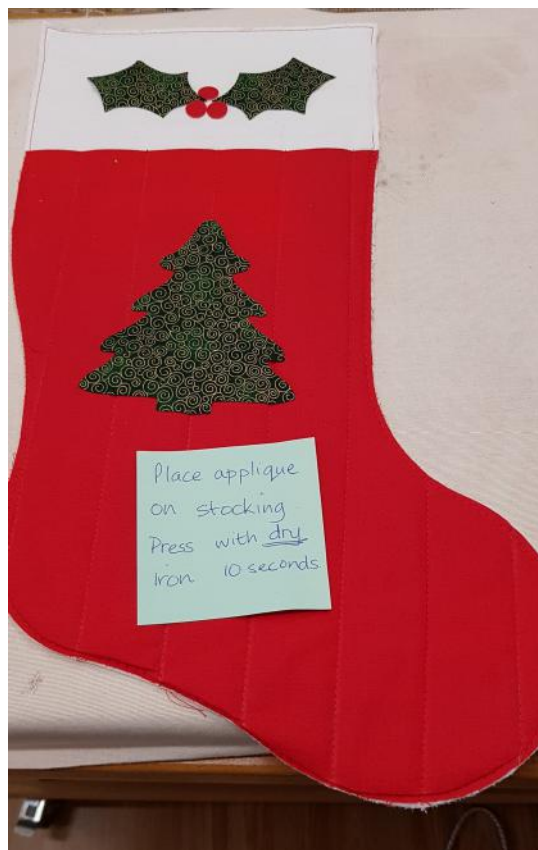


Quilt horizontal lines across the cuff.

Step 3

Place appliqué motifs (backed with Heat n Bond Lite) on the front of stocking and cuff.

Press with hot iron (no steam) for 10 seconds. Allow to cool before touching.



Sew down applique with a zig zag stitch 2.5 mm wide and 2.5 mm stitch length.

Use an open toe appliqué machine foot if you have one for a clear view.

Decorative braid

If using decorative braid on cuff, pin in place.



Stitch braid close to the edge using a zig-zag stitch 2.5 mm wide and 2.5 mm stitch length.

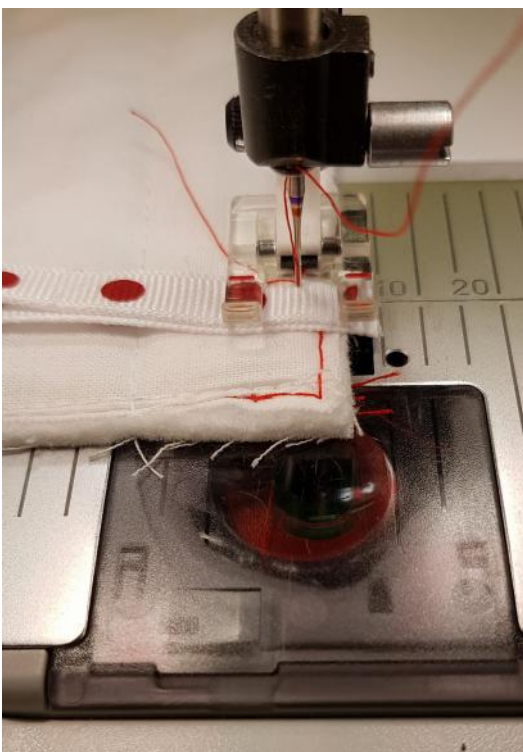


Step 4

Fold hanging loop in half. Pin or clip the hanging loop to back of stocking body at the top of the cuff as shown.



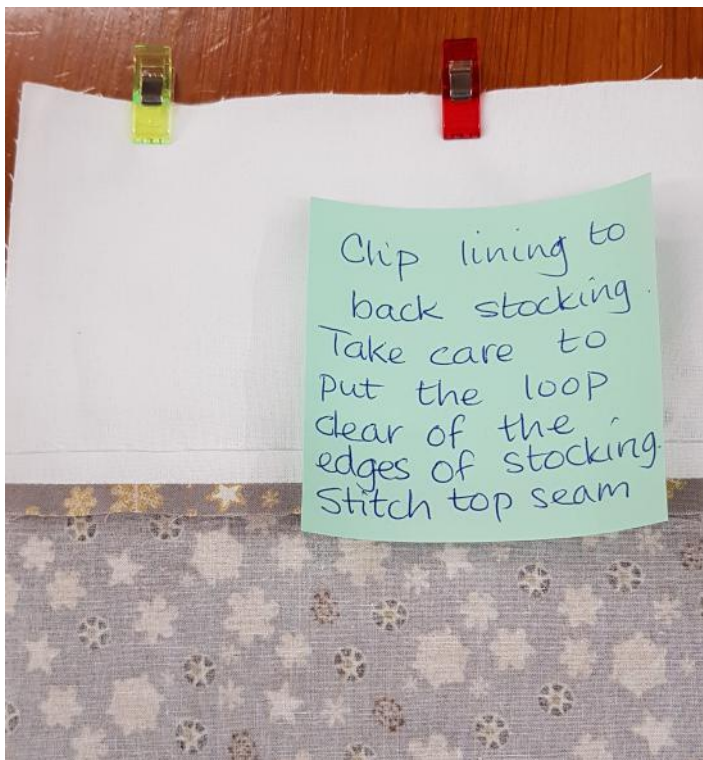
Stitch the hanging loop in place securely with a straight or zig zag machine stitch within the 3/8" (1 cm) seam allowance.



Step 5

Clip or pin front lining to front of stocking body at the top of the cuff rights sides together.

Repeat for back lining and back stocking body. Stitch across top seam for front. Repeat for back. Seam width 3/8" (1cm). Press seam open.



Lay front stocking and lining onto back stocking and lining, rights sides together.

Pin or clip around the edges leaving an opening on the lining as indicated in the photograph to the right.



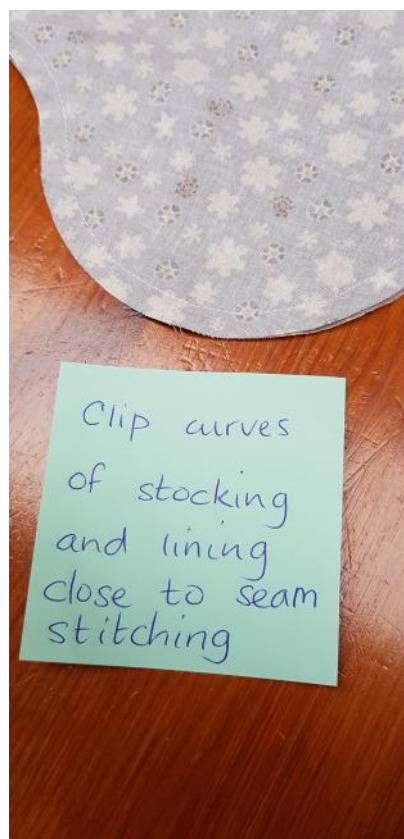
Stitch around the entire edge leaving open at the marked opening. Seam width 3/8" (1 cm).

Secure beginning and end stitching with a backstitch (a few stitches in reverse mode).

Take care to ensure the holding tape is not caught in the seam.



Clip curves close to seam stitching.



Step 6

Turn stocking through the opening to the right side.



Gently, push curves into shape with a chopstick.



Stitch opening closed with either a straight or zig-zag stitch.



Step 7

Push lining into stocking body.



Top stitch top of stocking cuff. Use a longer stitch (3.5 mm). Take care sewing over the bulky seams-sew slowly!

The finished stockings.

