

FUN FABRIC DOORSTOP

Materials

- Oddments of furnishing fabrics, or corduroy
- Bits of felt
- Machining thread to match/contrast your fabrics
- Approximately 1.25kg of clean sand or gravel or small pebbles sealed in a small polythene bag, e.g. small freezer bag
- Small pieces of bonda web or a pritt stick type glue
- Scrap paper and pencil



Instructions

1. From your chosen furnishing fabric cut 3 rectangles
2 of 25cm x 20cm
1 of 19cm x 6cm (for the handle)

These measurements all include a 1cm seam allowance all around. If you are using a fabric which frays very easily, then add a bit more to make a wider seam allowance.

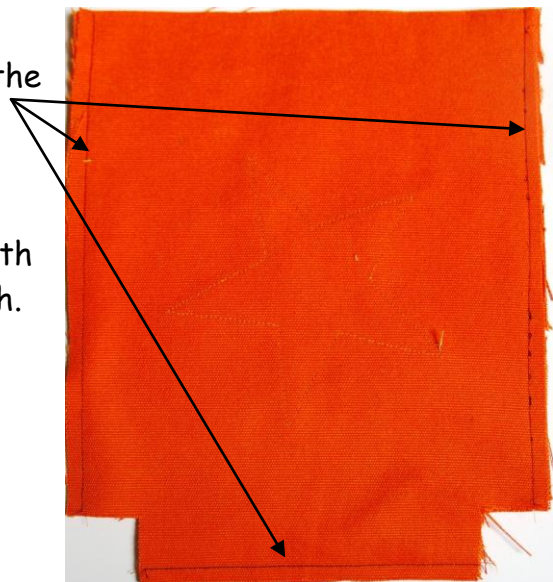
2. Cut a 3cm square out of two corners of each of the larger rectangles.

The squares need to be on the bottom edge of each rectangle - shown in this picture.



3. On the scrap paper, draw a simple design to fit onto one side of the doorstep. I decided on a star. Use this paper pattern to cut out your felt scraps to size.
4. Glue your felt design to the right side of one side of the doorstep rectangles, using either bonda web or pritt stick, but do not place the design too close to the top of the rectangle or too near the 1cm seam allowances. Machine round the edge of your felt design to hold it permanently in place on the fabric.
5. Machine the two large rectangles with 1cm seams, right sides together, along the 25cm edges and along the bottom edge. Press the seams open and flat.

I have used black thread to contrast with my fabric so you can see where to stitch.



6. To make the base of the bag, fold the cut out corners in so the raw edges meet with the sewn seams in the middle. Pin and sew across.

This is shown in this picture. Repeat for the other side.

7. Turn the door stop back to the right side, pushing out the corners of the base. Insert your bag of sand etc into it.

8. Now prepare the handle by pressing it in half lengthways, and then press under the raw edges, 1cm each side. Machine a top stitch along both edges and re-press.

9. Fold in a 1cm turning into the top edge of the door stop, and insert the handle into the top edge. Pin in place and machine two rows of stitching, one close to the top of the doorstop and one about 1cm in. You may need to get someone to hold the heavy part of the doorstop whilst you machine. Make sure that you reverse at either end of the stitching to give extra strength. Doorstop ready for action!

Karen Pearce
May 2008